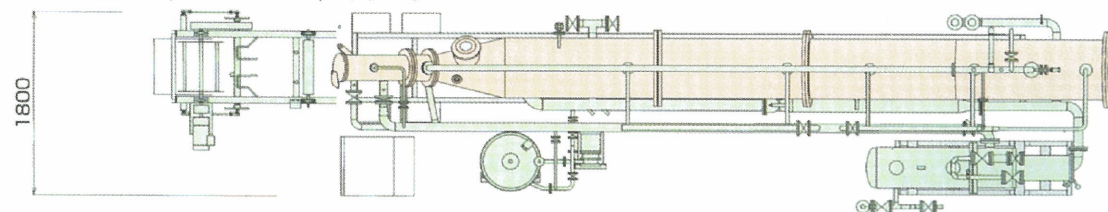
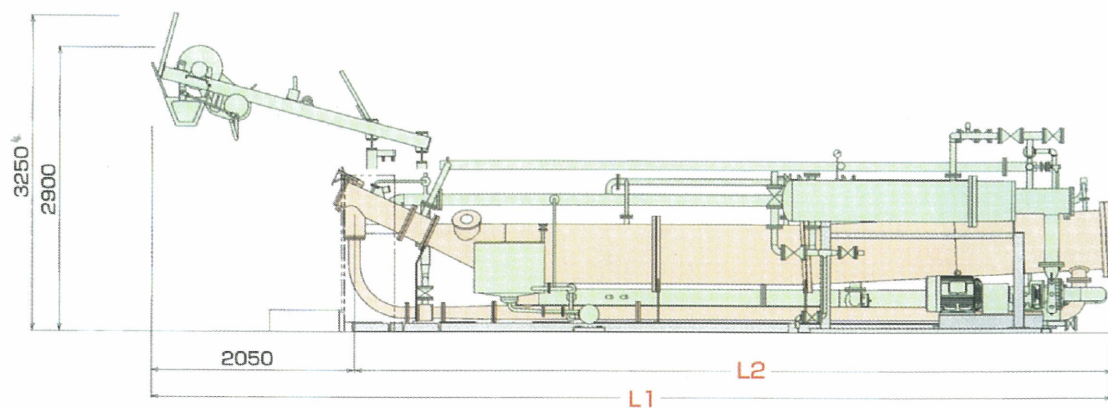
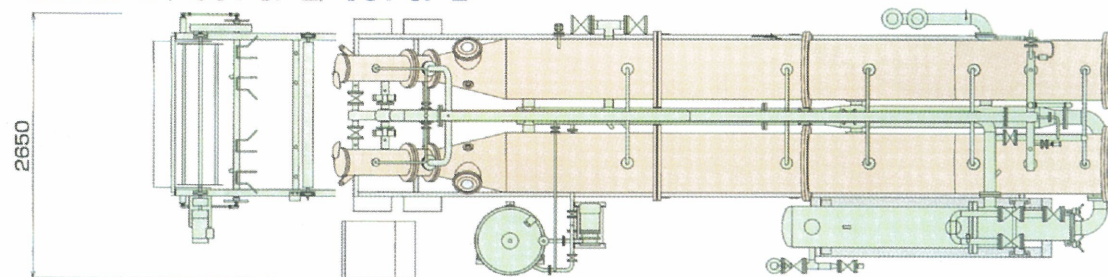


CUT-SP-1^S / CUT-SP-1 / CUT-SP-1^L



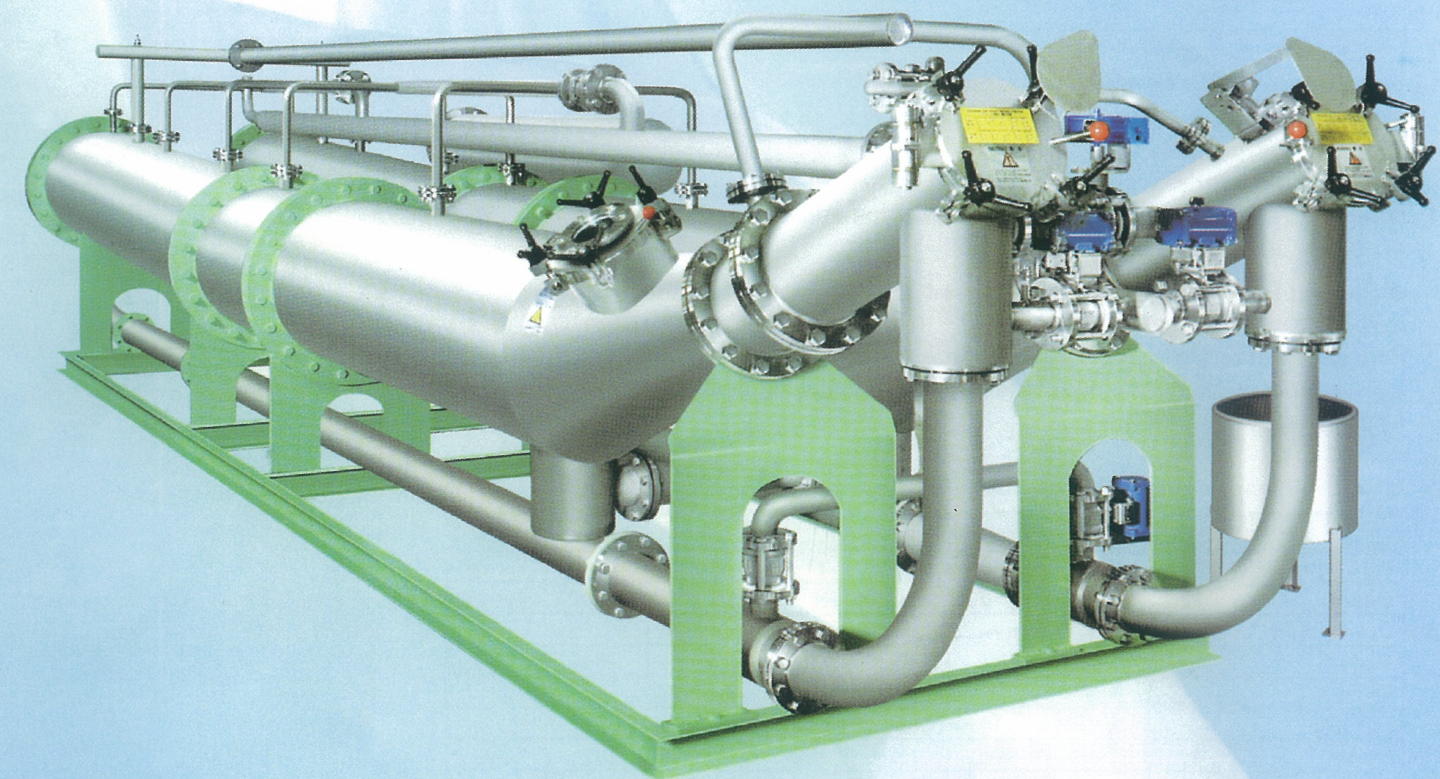
CUT-SP-2^S / CUT-SP-2 / CUT-SP-2^L



型 式	L1 (mm)	L2 (mm)
CUT-SP-1 ^S /2 ^S	8650	6600
CUT-SP-1/2	9650	7600
CUT-SP-1 ^L /2 ^L	11150	9100

HISAKA

**Model
CUT SP**
Special Circular Rapid



HISAKA WORKS.,LTD

Vital industrydiv.Dyeing & Finishing Machinery Dept

<Head Office>:4-2-14,Fushimimachi,Chuo-Ku,Osaka541-0044,Japan
 <Konoike Plant>:Vital Industry Div.Dyeing & Finishing Machinery Sales Dept
 2-1-48,Higashi-Konoike Cho,Higashi-Osaka City,Osaka 578-0973,Japan
 Tel:072-966-9631 Fax:072-966-9632 dyeing@hisaka.co.jp http://www.hisaka.co.jp
 HISAKA(SHANGHAI)COMMERCE CO.,LTD.
 699 WESTNANJIN RD,SHANGHAI Tel:021-5211-0701 Fax:021-5211-0720



HISAKA WORKS.,LTD.

Special CIRCULAR Model SP

In The High Fashion Field and Sports inner field,
Quality and Productivity which are not until now are offered!!

- Vastly improved for Dyeing affinity and quality against delicate material
- Eliminate existing Jet Dyeing Machine defect such as Crease(SIWA), Yarn shift(MEYORE) and Scuffing Mark(SURE/ATARI).
Being Model CUT-SP for Jigger and Beam Dyeing Machine Products.

High-Integrity

- Improved defect such as Crease (Shiwa), Yarn Shift (Meyore) and Scuffing Mark (Sure/Atari) specially for Synthetic thin Woven (15-30d).
ex) Nylon Filament Thin Woven (15-30d) etc.
ex) Nylon Textured Yarn Woven (15-50d) etc.
ex) Polyester Filament Thin Woven (20-30d) etc
- Improved defect such as Crease (Shiwa) and Scuffing Mark (Sure/Atari) for Synthetic Elasticated Woven/Knit.
ex) Nylon/Polyurethan Woven-Knit etc
ex) Polyester/Polyurethan Woven-Knit etc
ex) CDP/Polyurethan Woven-Knit etc.

Productivity

- Level Dyeing improves by high-speed running and process time shortening is possible.
Improvement in the speed 10 - 20% can be attained conventionally, and time shortening of Heating and Rinsing, etc. is possible
- Reduce Processing Loss by reduction of process failures and re-processing.
Reduce defected products and re-process from integrity trouble, increase production efficiency and useless processing cost will be eliminated..

■ CUT-SP type Jet Dyeing Machine Specification Table

	仕様	SP-1 ^{SSS}	SP-1 ^{SS}	SP-1 ^S	SP-1	SP-1 ^L	SP-2	SP-2 ^L
Capacity	kg	30~40	40~70	70~100	90~120	120~150	180~240	240~300
Liquor	Lit	300~400	400~700	550~1000	700~1000	900~1200	1400~2000	1800~2400
Dyeing tank		Max.W.Pressure 0.490 MPa		Max.Temperature 140 °C				
Power	kw	7.5kw	11kw	15kw	15kw	15kw	30kw	30kw
50°C→130°C		20min(Steam Pressure 0.59MPa)						
130°C→90°C		15min(Cooling Water 20°C 0.12~0.25MPa)						
Steam	kg	56kg	88kg	124kg	136kg	168kg	272kg	336kg
Cooling water	m ³	0.56m ³	0.88m ³	1.24m ³	1.36m ³	1.68m ³	2.72m ³	3.36m ³

■ EX.Application Data(Model:CUT-SP-1)

Kind of Fabric	Weight of Fabrics	Capacity	Liquor	m	kg
Nylon Filament Thin Woven(20d)	58	2.9	12	300×2	34.8
Nylon Filament Thin Woven(30d)	76	3.8	16	400×2	60.8
Nylon Texturized yarn Woven(12d)	22	1.1	10	500×1	11
Nylon/Pu Tricot	220	11	10	500×1	110
Nylon/Pu Woven	240	12	8	400×1	96
Polyester/Pu Woven	190	9.5	10	500×1	95
Polyester Filament Thin Woven(20d)	66	3.3	12	300×2	39.6

Feature

1. Non-Reel Effect

By optimizing a running fabrics and the injection angle of a nozzle, useless tension is mitigated and damage is not given to products Therefore, defect such as Crease(SIWA) particular happen on Reel type is improved

2. Special Inner Tank Structure

HISAKA designed original special inner tank realizes stable running and uniform accumulation, then ultimate quality is realized

