

**High Temperature  
Rinsing System (HTRS)**

- Productivity improved(save time)utility savings
- Improving quality and color fastness
- Dyeing accident prevention
- (Prevention of contamination)

**Low Liquid  
Rinsing System(LLR)**

- Reduce the frequency cleaning
- Reduction of liquor quantity and time  
(Compared to the conventional 1/3)

**OPTION**

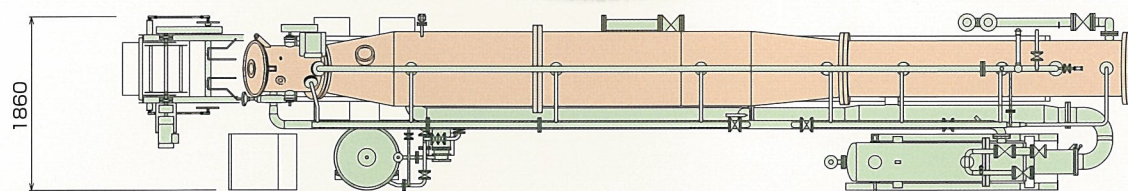
**Dyestuff Dissolving  
System (HDE)**

- No need of a dyestuff dissolved
- Eliminate the problem is insoluble dye
- In any dissolution, allowing injection
- Simplifies the preparation of dye

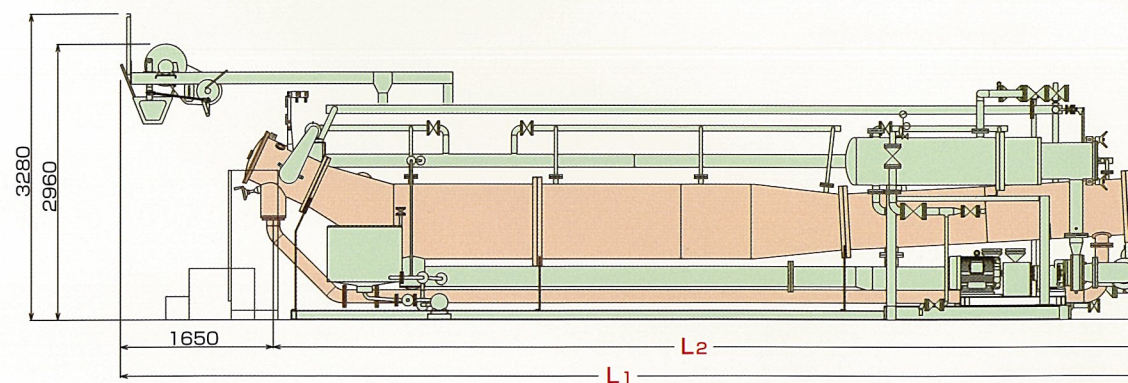
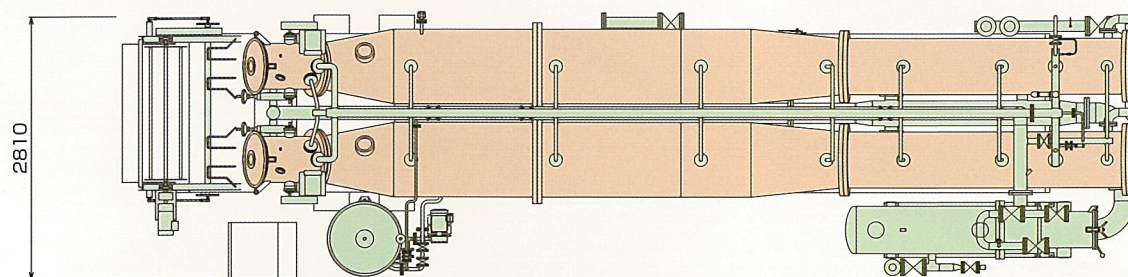
**Streamlined System**

- Configuration management system for operating conditions
- Production control system
- Automatic·dyestuff and chemical measuring system
- Automatic·dyestuff and chemical feeding system
- Fabric transportation system
- pH Control system

**CUT-AR-1 / CUT-AR-1L / CUT-AR-1LL**



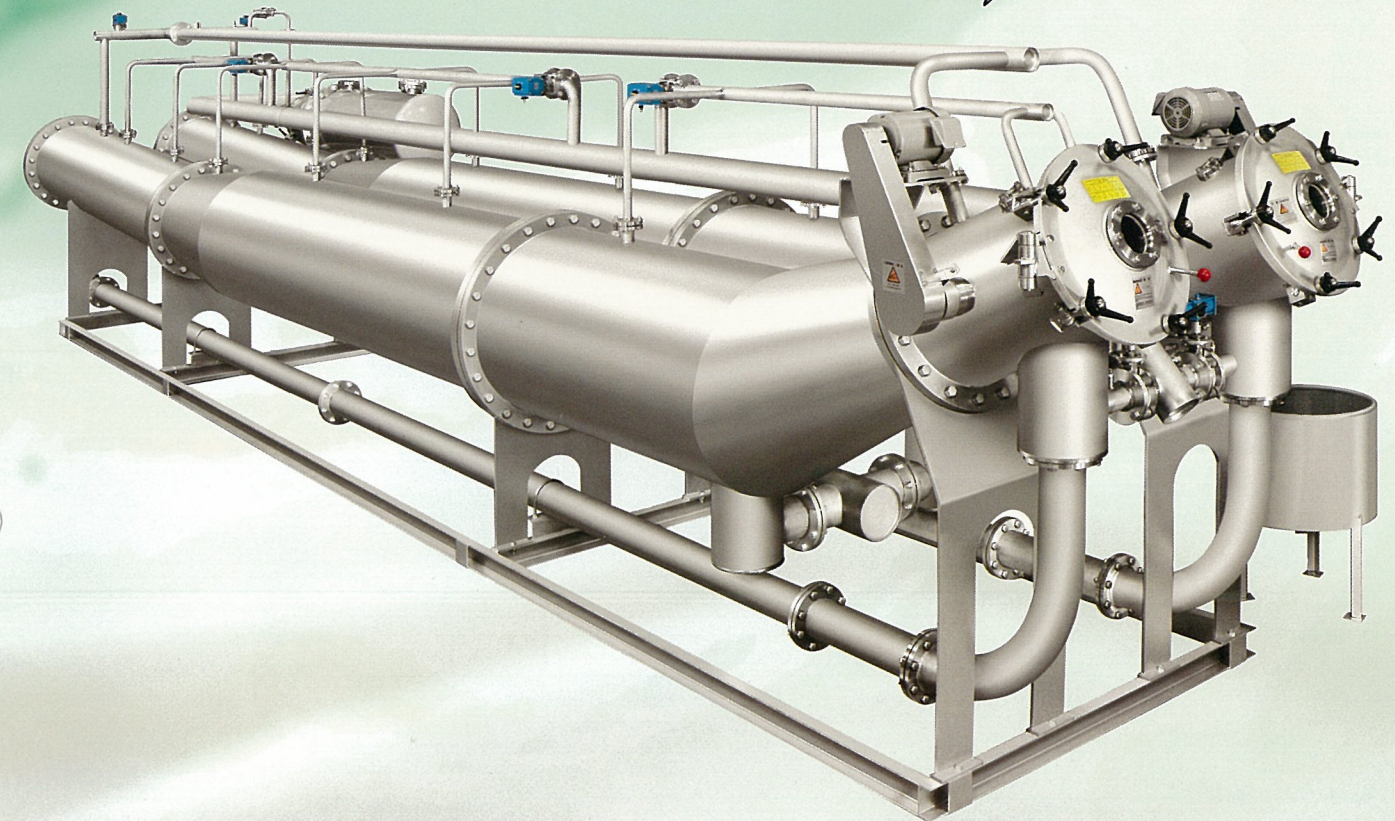
**CUT-AR-2 / CUT-AR-2L / CUT-AR-2LL**



	<b>CUT-AR-1 / 2</b>	<b>CUT-AR-1L / 2L</b>	<b>CUT-AR-1LL / 2LL</b>
<b>L1</b>	9420	10920	11920
<b>L2</b>	7770	9270	10270

**HISAKA**

**Model  
CUTAR**  
*High Performance Circular*





# JUMBO RAPID JET DYEING MACHINE

## Model CUT-AR

Global brand HISAKA's "Circular", now became a pronoun of the jet dyeing machine. It's performance and reliability have been highly evaluated in the industrial materials such as particularly automobile sheet, interior material, etc. HISAKA's Circular have been playing an active in the world.

### Feature

#### Quality improvement and stabilization

Though it is a mass production machine, it realizes equalization of stay balance and keeps running stability for comparatively light and also heavy weight fabric. It improves even dyeing and prevents problems such as crease and uneven dyeing also can obtain stable quality.

#### Cost reduction

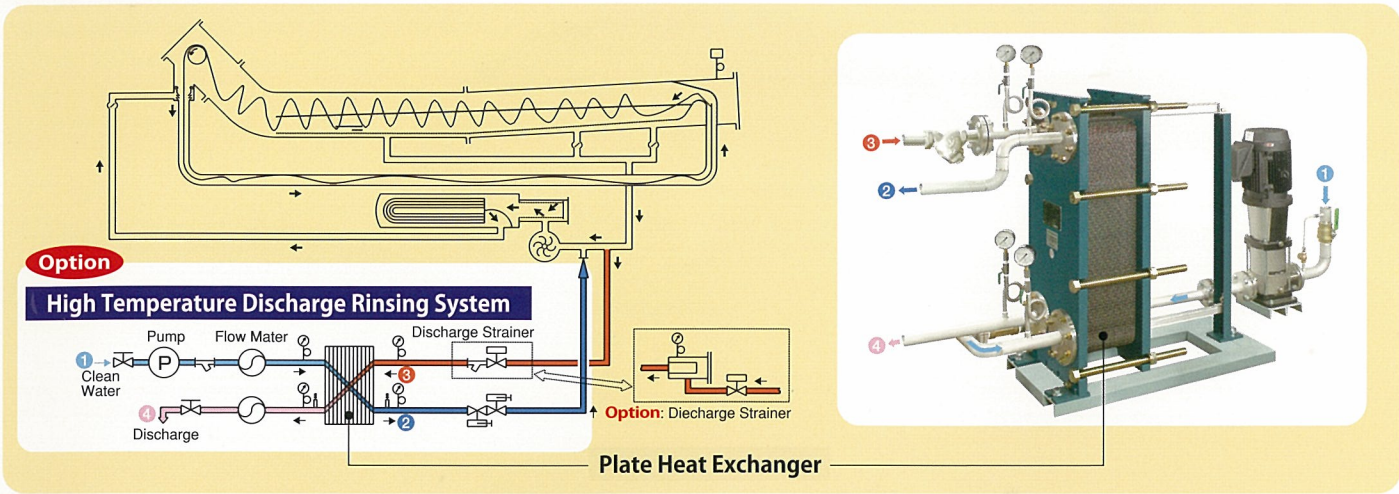
Though it is the same installation space as standard (capacity) HISAKA Circular, it obtains the productivity more than 1.5 times by vastly boosting effective internal volume. It improves manufacturing efficiency and low liquor ratio, therefore reducing running cost and personnel expenses are available.

#### Delivery Correspondence

While running trouble can be decreased by equalization of stay balance, it can contribute for defected products reduction and also delivery time by equipping flow meter in order to control liquor ratio and washing function for anti-flaming agent as optioning.

#### EX. Application Data

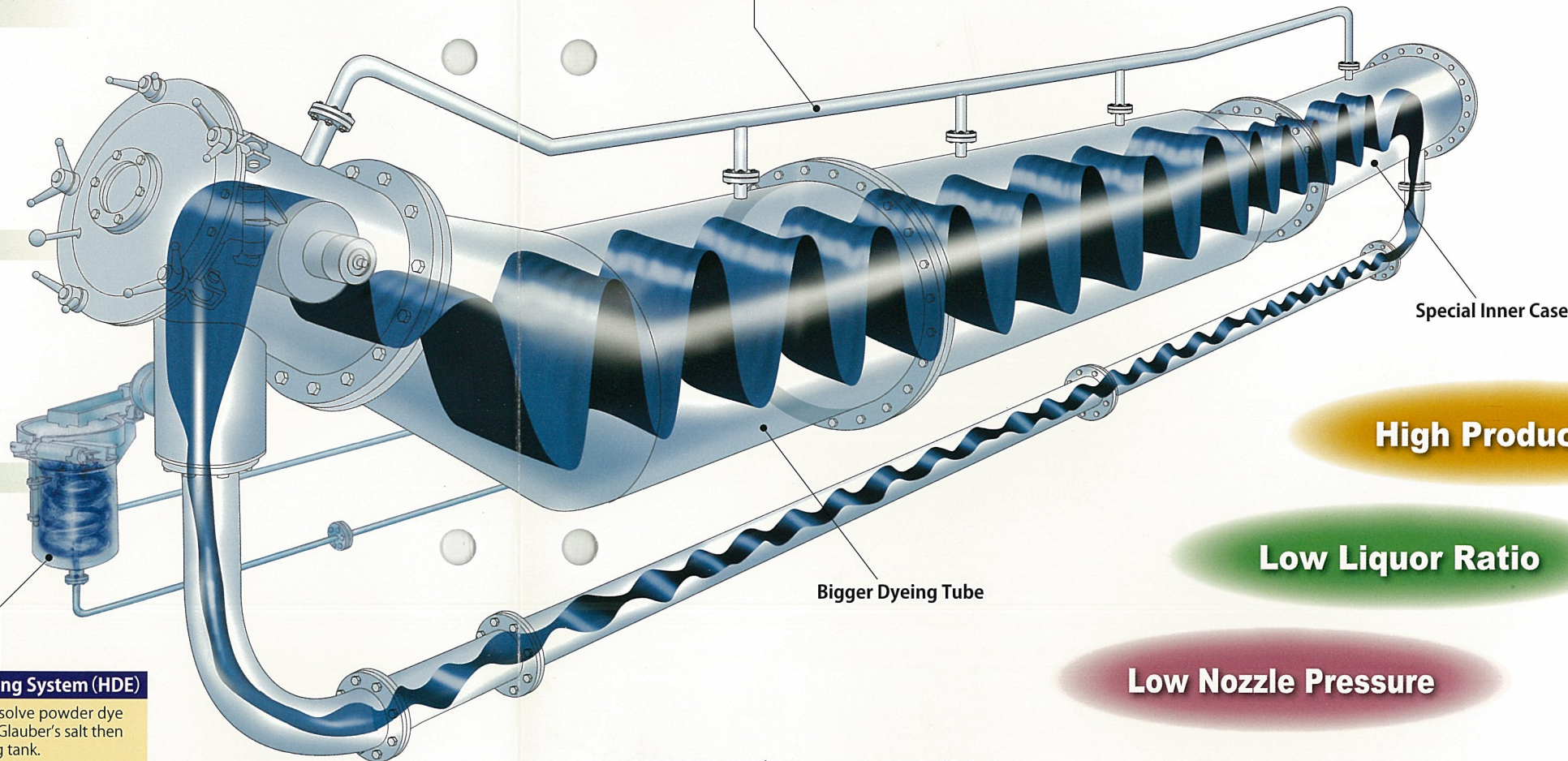
Use	Material	Kind of Fabric	Composition (%)	Weight of Fabric (g/m)	Fabric Length (m)	Capacity (kg)	Liquor (lit)	Liquor Ration
Automotive Sheet	PET	Knit	100	500	1300	650	3600	1:5.5
Automotive Sheet	PET	Knit	100	560	1500	840	4000	1:4.8
Automotive Sheet	PET	Knit	100	480	2000	960	4000	1:4.2
Underwear	Ny/PU	Knit	83/17	250	1000	250	3000	1:12
Underwear	PET/PU	Knit	90/10	270	1000	270	2600	1:9.5
Sport	T/C	Knit	75/25	278	2400	666	4000	1:7
Clothing	Ny/A/R/PU	Knit	25/33/33/9	333	1200	400	3800	1:9.5
Thawb	PET	Woven	100	150	4480	672	2740	1:4.1
Thawb	PET	Woven	100	350	1480	516	2400	1:4.7
Interior	PET	Woven	100	350	1100	304	3200	1:10.5
Interior	PET	Woven	100	850	500	425	4250	1:10
Interlining	PET	Woven	100	36	4800	171	4000	1:23



#### Option Low Liquor Cleaning Device

#### Option Dyestuff Dissolving System (HDE)

Automatically dissolve powder dye stuff and powder Glauber's salt then spread into dyeing tank.



High Productivity

Low Liquor Ratio

Low Nozzle Pressure

#### PERFORMANCE (Subject to the kind of Fabrics)

Item	Model	Circular AR Series					
		CUT-AR-1	CUT-AR-2	CUT-AR-1L	CUT-AR-2L	CUT-AR-1LL	CUT-AR-2LL
Max. Temperature	°C	140					
Max. W. Pressure	Mpa	0.49					
Liquor	lit	1000-1500	2000-3000	1300-1800	2600-3600	1500-2300	3000-4600
Capacity	kg	140-180	280-360	180-240	360-480	240-280	480-560
Power	kW/hr	32-33	59-60	32-33	59-60	32-33	59-60
Heating Rate 50-130°C By 0.8MPa saturated steam	min.	20					
Cooling Rate 130-90°C By 20°C cooling water	min.	15					
Fabric Speed	m/min.	300-500					